

4 bed 2 bath 2 cars
290 m²

Width 13.40 m x Depth 25.00 m



8+ STAR RATING

MK
290



SINGLE STORY FAMILY HOUSE

- Formal Living / Dining
- Separate home theatre
- Open plan, family and meals
- Modern kitchen with island bench
- Internal access from garage
- Formal entry foyer
- Large master bedroom with large walk-in robe and ensuite
- Master bedroom with access to courtyard
- Ensuite with bath and shower
- Laundry with direct access to side of house



Built in days, last for Century...



© 2013 Auset Pacific Pty Ltd. All rights reserved

AUSET
PACIFIC PTY LTD

RAPID BUILDING SYSTEM™



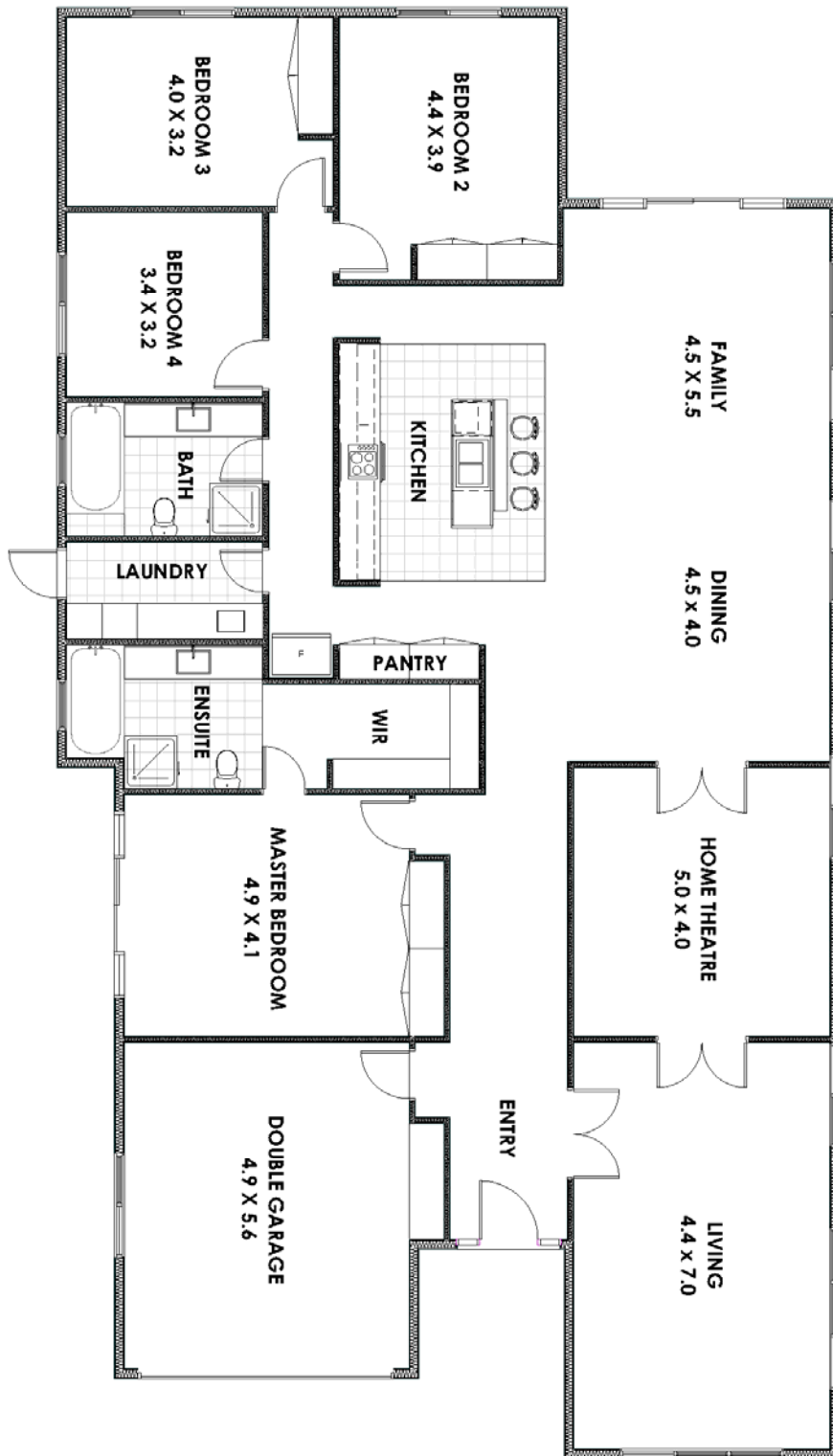
INFO@AUSET.NET.AU

0438278429

WWW.AUSET.NET.AU

INCLUSIONS

- External and Internal Walls
- Floors
- Roof
- Doors and windows
- Electrical and Plumbing
- Kitchen
- Bathrooms
- Laundry
- Wardrobes
- Workers for assembly



*Based on generic floor plan. Illustrations are indicative only.

