

4 bed 2 bath 2 cars
285 m²

Width 14.00 m x Depth 22.40 m



8+ STAR RATING

MK
285



SINGLE STORY FAMILY HOUSE

- Combined family/dining area
- Large modern kitchen with island bench and pantry
- Separate home theatre
- Separate children area with large Bathroom and separate toilet
- 3 bedrooms, all with built-in's
- Large master bedroom with ensuite and walk-in robe
- Ensuite with bath and shower
- Internal access from garage
- Laundry with direct access to side of house



Built in days, last for Century...



© 2013 Auset Pacific Pty Ltd. All rights reserved

AUSET PACIFIC PTY LTD

RAPID BUILDING SYSTEM™



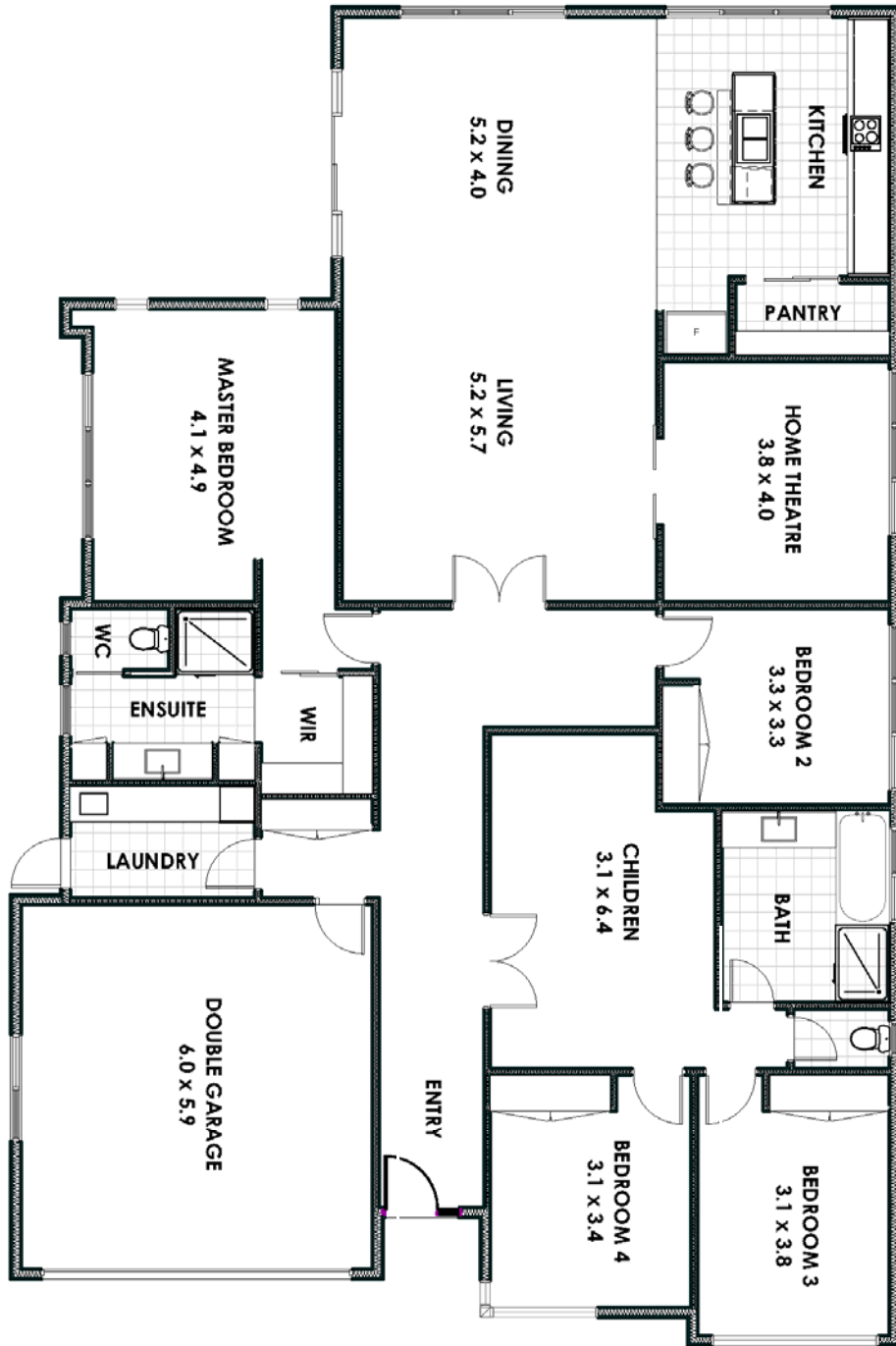
INFO@AUSET.NET.AU

0438278429

WWW.AUSET.NET.AU

INCLUSIONS

- External and Internal Walls
- Floors
- Roof
- Doors and windows
- Electrical and Plumbing
- Kitchen
- Bathrooms
- Laundry
- Wardrobes
- Workers for assembly



*Based on generic floor plan. Illustrations are indicative only.

