

4 bed 2 bath 2 cars
290 m²

Width 16.40 m x Depth 22.70 m

- Combined family/dining area
- Formal entry foyer/lounge area
- Large Master bedroom to front of the house, with built-in's, walk-in-robos and ensuite
- Ensuite with bath
- Internal access to double garage
- Large modern kitchen with pantry and island bench
- Laundry with direct access to side of house
- Large living and dining area with access to back of the house
- Separate private area with spacious bathroom, separate toilet, 3 bedrooms, all with built-in's and additional walk-in-robe
- Large sunroom

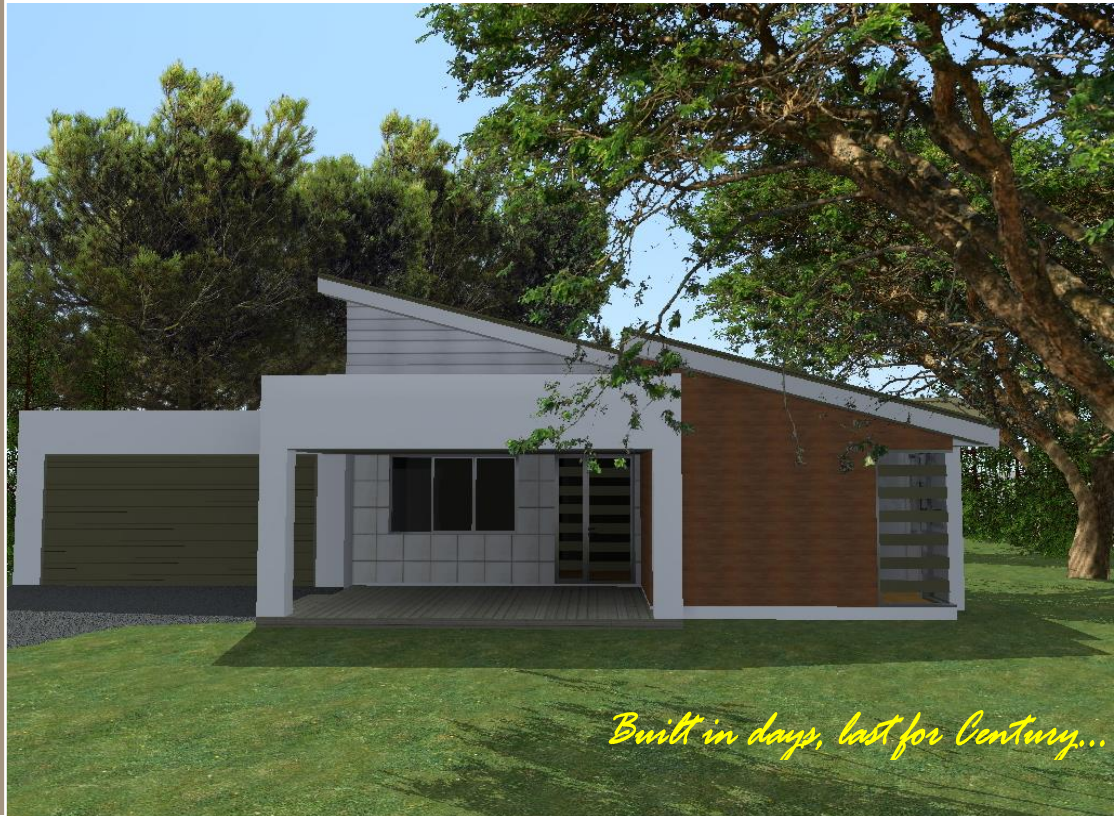


8+ STAR RATING

MK
290



DOUBLE STORY FAMILY HOUSE



© 2013 Auset Pacific Pty Ltd. All rights reserved

AUSET PACIFIC PTY LTD

RAPID BUILDING SYSTEM TM



INFO@AUSET.NET.AU

0438278429

WWW.AUSET.NET.AU

